

From: Moore, Nikki
To: [Amy Lueders](#); [Aden Seidlitz](#); [William Childress](#); [McAlear, Christopher](#); [Bowman, Randal](#); [Peter Mali](#)
Subject: Organ Mountains-Desert Peaks National Monument Briefing Materials
Date: Tuesday, June 27, 2017 12:51:00 PM
Attachments: [OMDP National Monument 6-23-17 \(1\).docx](#)
[Attachment 3 - Figure 10.pdf](#)
[Attachment 2 - Figure 9.pdf](#)
[Attachment 1 - OMDP Map.pdf](#)

Attached are the briefing materials for the 3:00 pm briefing with Downey. I will also bring larger versions of the maps.

Nikki Moore

Acting Deputy Assistant Director, National Conservation Lands and Community Partnerships
Bureau of Land Management, Washington D.C.

202.219.3180 (office)

202.740.0835 (cell)

**INFORMATION/BRIEFING MEMORANDUM
FOR THE ACTING DEPUTY CHIEF OF STAFF**

DATE: June 23, 2017
TO: Downey Magallanes, Acting Deputy Chief of Staff
FROM: Mike Nedd, Acting Director – Bureau of Land Management

SUBJECT: Briefing on Organ Mountains-Desert Peaks National Monument

The purpose of this memo is to provide general information on the BLM's Organ Mountains-Desert Peaks National Monument (OMDP).

KEY FACTS:

Stakeholder Positions:

- Supporters of the designation of the OMDP are:
 - *Former United States Senator Jeff Bingaman (D-NM) and current United States Senators Tom Udall (D-NM) and Martin Heinrich (D-NM). The senators introduced legislation to protect portions of the area as Wilderness, a National Conservation Area or a National Monument in years past.*
 - *The City of Las Cruces*
 - *The Town of Mesilla*
 - *The City of El Paso*
 - *Dona Ana County*
 - *The Friends of the Organ Mountains-Desert Peaks*
 - *Sportsmen's organizations*
 - *Green Chamber of Commerce*
 - *GBA Strategies poll in 2014 showed 72% public support for OMDP designation*
 - *Native American Tribes*
 - *Paleozoic Trackways Foundation*
 - *Environmental organizations*
- Opposition to the designation of the OMDP are:
 - *The Dona Ana Soil and Water Conservation District*
 - *Elephant Butte Irrigation District*
 - *GBA Strategies poll in 2014 showed 12% public opposition for OMDP designation*
 - *Individual ranchers*
 - *Congressman Steve Pearce introduced legislation recommending the boundary of the OMDP to be approximately 60,000. He is currently supporting a 60,000 acre boundary.*

Organ Mountains-Desert Peaks National Monument Facts

- A variety of recreational uses, livestock grazing, hunting and natural and cultural resource management has continued within the OMDP since designation. The OMDP has no production of coal, oil, gas, and renewable minerals. It is unlikely any production of coal, oil and gas, and renewables would have occurred if OMDP had not been designated. There have not been any nomination of leases for coal, oil, or gas in at least 10 years in Dona Ana County nor are there any leases within OMDP. Please see Attachments 2 and 3.
- There are relics of historic mining within OMDP but no active mining has occurred in the past two decades. Currently, there are no mining claims within the OMDP. The last mining within OMDP was associated with the sale of common variety minerals (sand, rock and gravel) through an established Common Use Area (a larger area where permits are issued to multiple users). The last sale in this area occurred in 2008 (six-years prior to monument designation) due to a lack of interest prior to designation.
- The Picacho Peak Pit, a gravel aggregate facility located on state lands southwest of the Robledo Mountains, is the only active operation outside the OMDP boundary. There has been no change in activities as a result of the monument designation.
- Recreation use and visitation has increased since the designation of OMDP resulting in economic benefits for the surrounding community of Las Cruces. The total economic output from monument visitation in 2016 was \$24,359,990. BLM recorded the following numbers of visits at the three day-use areas in the Organ Mountains: 67,378 in FY 2013-2014, 84,197 in FY 2014-2015, and 170,451 in FY 2015-2016. The visitation numbers indicate that visitation more than doubled post designation of the OMDP.
- There are 38 allotments wholly or partially contained within OMDP. These allotments include 86,271 permitted Animal Unit Months (AUMs). Livestock grazing has not changed as a result of the OMDP designation.
- OMDP has four separate units: Organ Mountains, the Dona Ana Mountains, the Robledo and Las Uvas Mountains, and the Petrillo Mountains. The Organ Mountains has the most developed recreation sites including Recreation Fee areas, but also has many opportunities for dispersed recreational use. The other three units have more undeveloped, backcountry dispersed recreation, except in the Dona Ana Mountains where there is a very popular mountain bike, equestrian and hiking trail system beloved by the local mountain bike community.
- Near the south end of the Organ Mountains there is a complex of rock shelters dating to the Middle Archaic Period through the Formative Period (400 to 1450 CE). At one of these rock

shelters the excavators found corn that was, for a time, the earliest corn in the United States (approximately 4000 years old).

- There are eight Wilderness Study Areas (WSA), a National Natural Landmark, four Areas of Critical Environmental Concern, three National Recreation Trails and a trail under study for National Historic Trail designation within the OMDP boundary.

BACKGROUND:

The OMDP (496,330 acres) was established by Presidential Proclamation on May 21, 2014. OMDP has not yet initiated a Resource Management Plan (RMP). The 1993 Mimbres RMP will be followed in the interim.

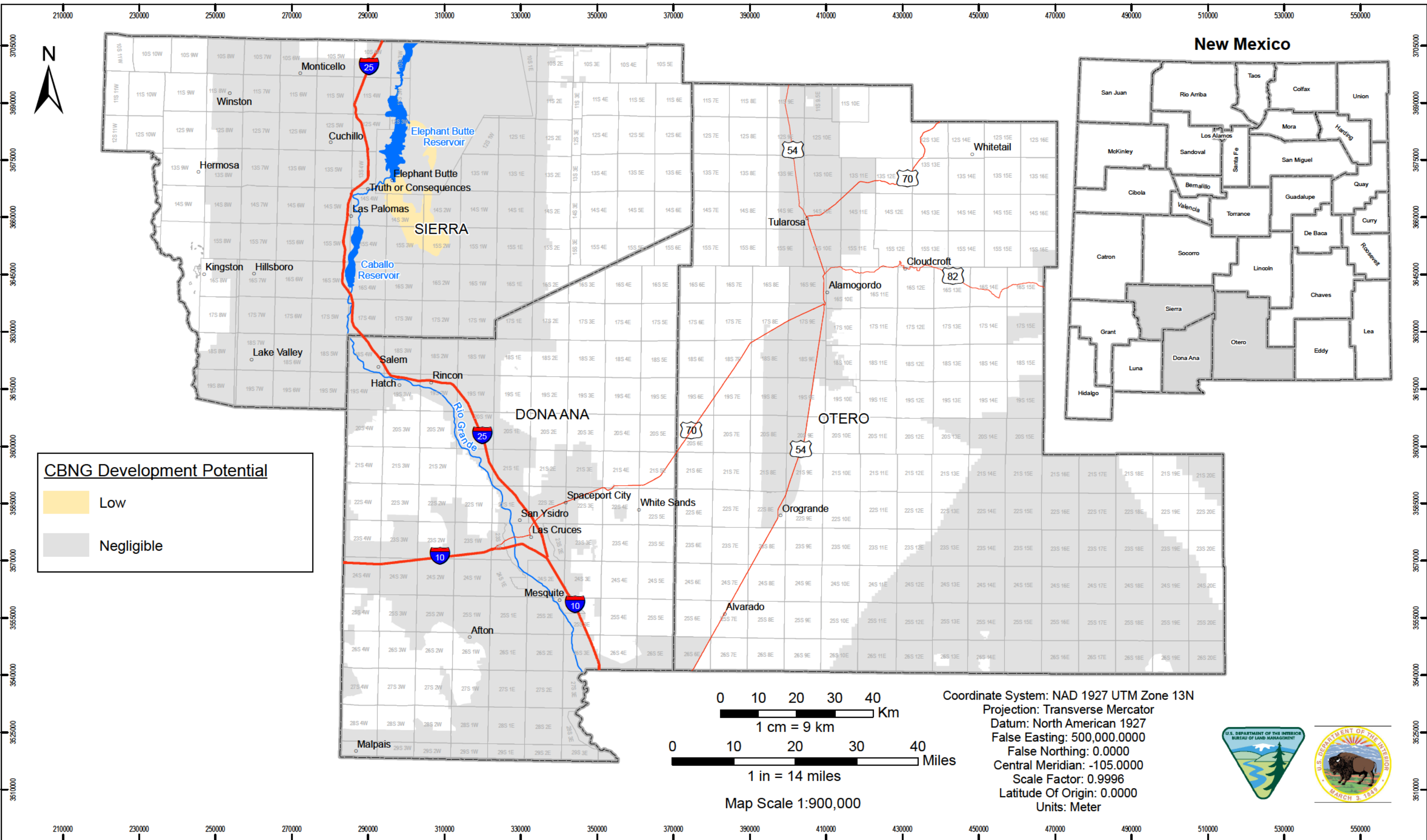
ATTACHMENTS

Attachment 1 – OMDP Map

Attachment 2 – Figure 9

Attachment 3 – Figure 10

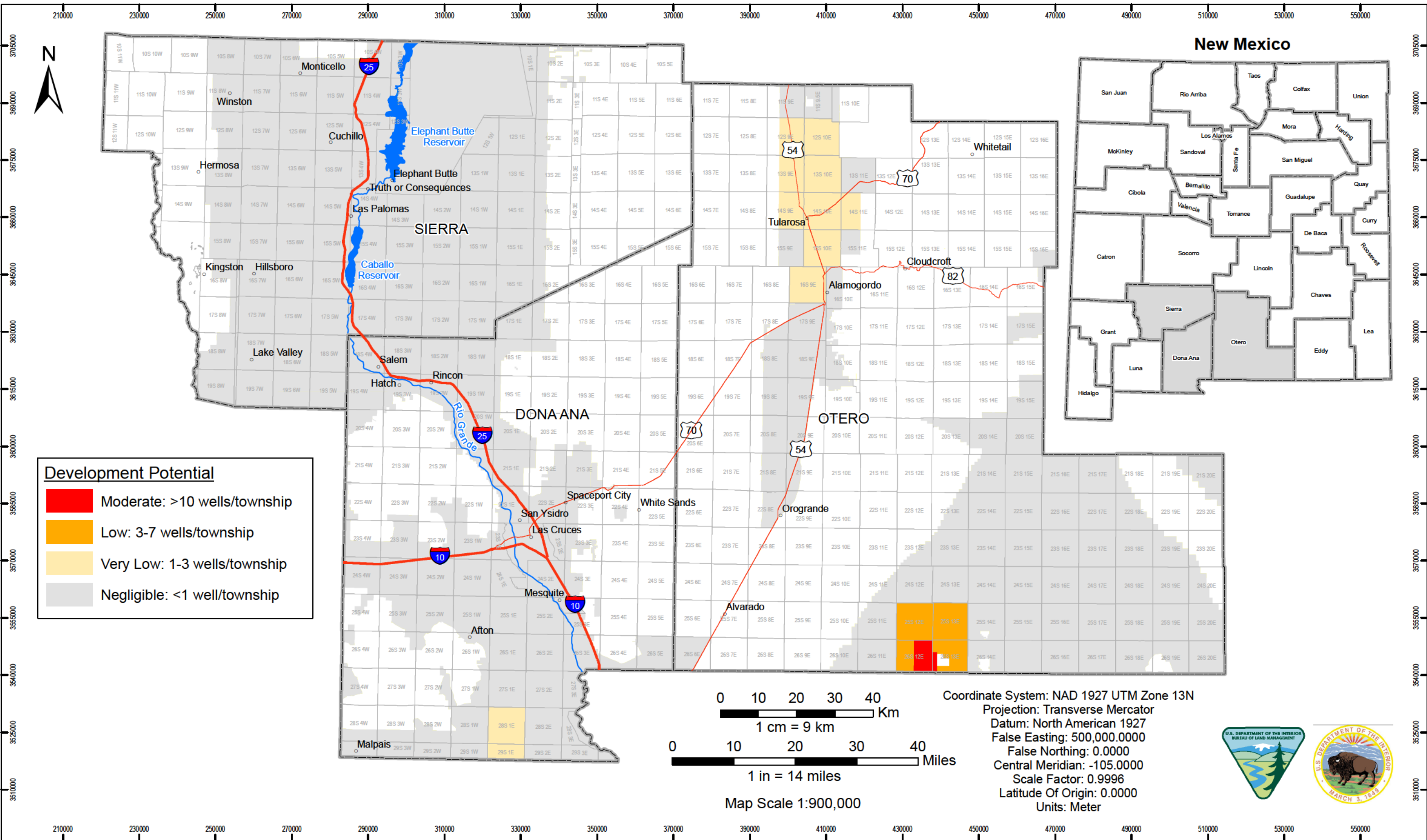
Figure 10.
Coalbed natural gas (CBNG) development potential within the TriCounty Planning Area.



James Glover, Geologist
October, 2015

No warranty is made by the Bureau of Land Management as to the accuracy, reliability, or completeness of these data for individual or aggregate use with other data.
Original data was compiled from various sources. This information was developed through digital means and may be updated without notification.

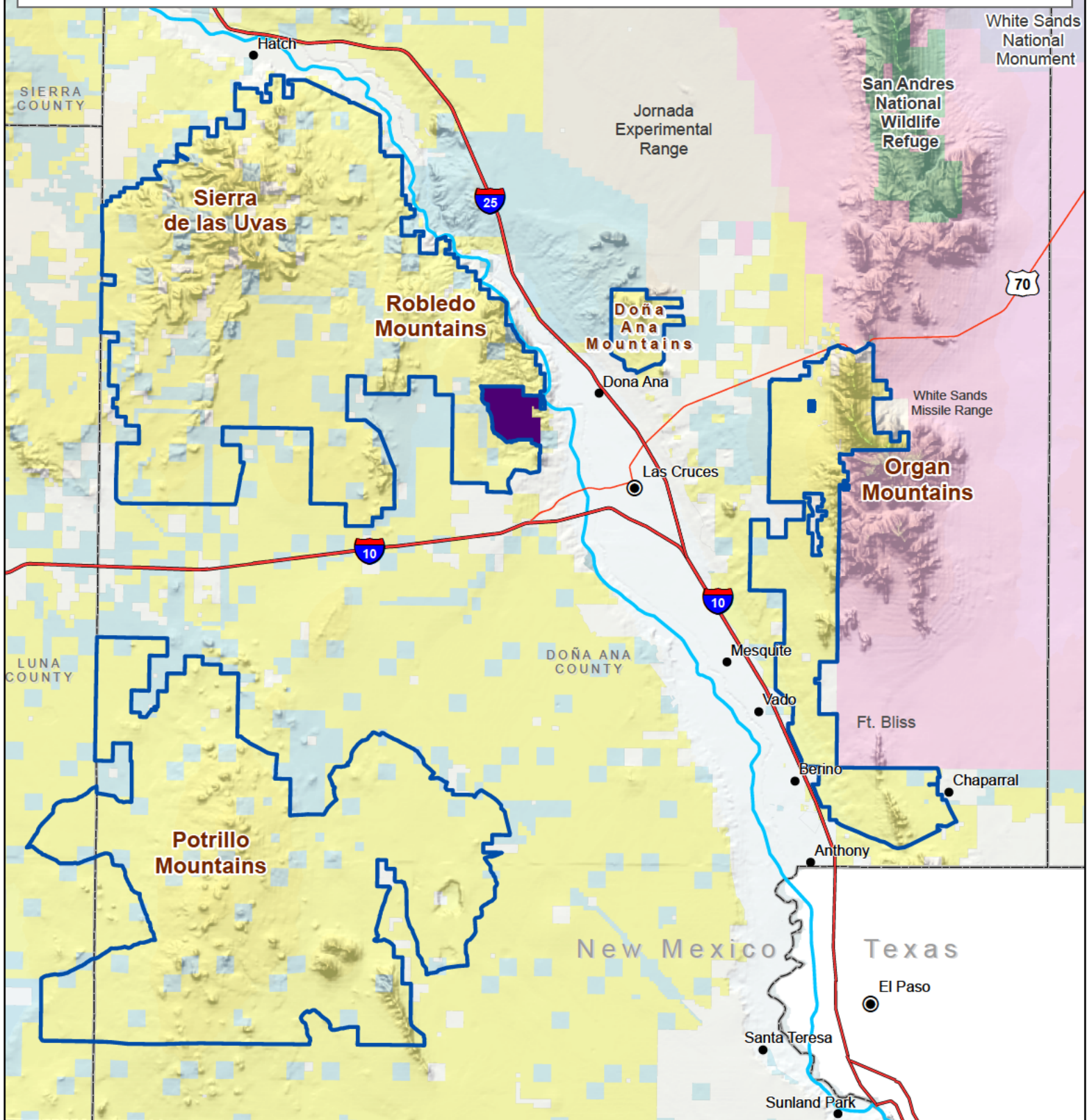
Figure 9.
Conventional oil and gas development potential within the TriCounty Planning Area, 2015-2035.



James Glover, Geologist
October, 2015

No warranty is made by the Bureau of Land Management as to the accuracy, reliability, or completeness of these data for individual or aggregate use with other data.
Original data was compiled from various sources. This information was developed through digital means and may be updated without notification.

Organ Mountains - Desert Peaks National Monument

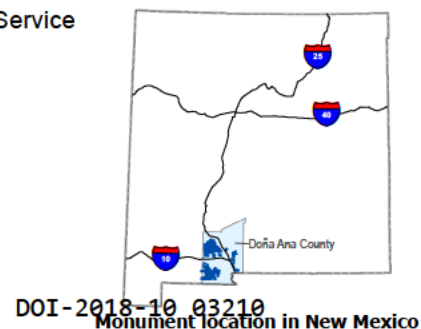


- | | | |
|---|-------------------------|-----------------------|
| OMDP National Monument | BLM | National Park Service |
| Prehistoric Trackways National Monument | Bureau of Reclamation | Private |
| | Dept. of Agriculture | State |
| | Dept. of Defense | State Park |
| | Fish & Wildlife Service | |

No warranty is made by the Bureau of Land Management as to the accuracy, reliability, or completeness of these data for individual use or aggregate use in other data, or for purposes not intended by the BLM. Spatial information may not meet National Map Accuracy Standards. This information is subject to change without notification.
Date: 5/15/2017

Projection: UTM Zone 13
Datum: NAD 1983

0 4 8 Miles
1 in = 8 miles



DOI-2018-10 03210
Monument location in New Mexico